

Machikado Museum Project



We will introduce a wide variety of cultural treasures of the Chuo City handed down for 400 years from the

Chuo City is a historic city famous for its long history and traditions which has thrived as a center of Japanese cultures, commerce, industries and information. In spite of its small size, it is full of historically attractive sites and landmarks including "Nihonbashi"; a famous bridge which is a starting point of the Edo Five Highways, "Ginza"; a world's well-known shopping area, "Kabutocho"; Japan's Wall Street, "Tsukiji"; a center of Japanese food culture, "Tsukuda" and "Tsukishima"; rich waterfront areas. With these attractive sites, Chuo City has flourished from the Edo Period as a vibrant and dynamic community where people gather.

Over the past 400 years, Chuo City has cherished its history and traditions and various cultural treasures have been rooted from the Edo Period such as local festivals, long-established shops and other attractions.

To invite you to these attractive cultures of Chuo City, we have proceeded with "Machikado Museum Project" joined by 22 shops and museums and we have shown you a wide variety of the local cultural treasures. Each museum and shop has a unique way of displaying cultures and techniques such as showcases of traditional crafts in small and long-established shops, displays of history and manufacturing of Japanese companies and displays of "Mikoshi"—portable shrine for local festivals.

You can take a look at the cultural treasures of Chuo City

No.1 Edo Broom Museum



The handmade broom works as an eco-friendly magical cleaner in the modern world



Administrator: Shirakiya Nakamuradenbei Shouten Inc.

3-9-8 Kyobashi Chuo-ku, Tokyo
Opening hours: 10:00-19:00 Monday-Saturday
(Closed on National Holidays and the year-end through the New Year's Holidays)

Access:

- One minute walk from Takaracho Station Exit A3
- Two minute walk from Kyobashi Station Exit 2

No.4 Shochiku Otani Library



The treasure-house of materials on Theaters and Movies



Administrator: Public Utility Foundation Shouchiku Otani Library

1-13-1 Tsukiji, Chuo-ku, Tokyo
Ginza Shochiku Square 3rd Floor
Opening hours: 10:00-17:00 Monday-Friday
(Closed on National Holidays, the year-end through the New Year's Holidays and the last Thursday of each month)

Access:

- Three minute walk from Higashi-ginza Station Exit 5
- Eight minute walk from Shintomi-cho Station Exit 1

No.2 Tabi (Japanese split-toe socks) Museum



Japanese sense of beauty starts from the foot



Administrator: Onoyasohonten Ltd.

2-2-1 Shintomi, Chuo-ku, Tokyo
Opening hours: 9:00-17:00 Monday-Friday
(Closed on National Holidays and the year-end through New Year's Holidays)

Access:

- One minute walk from Shintomicho Station Exit 2

No.5 Sketches of Noren(Traditional shop curtain) and Chochin(Paper lantern) Museum



Stylish and dynamic Logos



Administrator: Tsutaya Shouten Co. Ltd.

6-5-5 Tsukiji, Chuo-ku, Tokyo
Opening hours: 7:30-17:30 Monday-Saturday
(Closed on National Holidays and the year-end through the New Year's Holiday and Market closed days)

Access:

- Five minute walk from Tsukiji Station Exit 1
- Ten minute walk from Tsukiji shijo Station Exit A1

No.3 Mizuno Printing Museum

Display the history of the Japanese printing technology which started here



Administrator: Mizunoprtech Inc.

2-9-2 Irifune Chuo-ku, Tokyo
Opening hours: 10:00-16:00 Monday-Friday
(Closed on National Holidays and the year-end through the New Year's Holidays)

Access:

- Five minute walk from Shintomicho Station Exit 5
- Five minute walk from Hatchobori Station Exit A2

No.6 Toothpick (toothpicks and Kuromoji pick for Japanese sweets)Museum



Microcosm of the chic Edo period life style



Administrator: Nihonbashi Saruya Inc.

1-12-5 Nihonbashi-muromachi, Chuo-ku, Tokyo
Opening hours: 10:00-18:00 Monday-Saturday
(Closed on National Holidays)

Access:

- Five minute walk from Mitukoshimae Station Exit A1

No.7 Daiichi Sankyo KUSURI (Medicine) Museum



Get to know the world of "Medicines"



Administrator: Daichi Sankyo Inc.

3-5-1 Nihonbashihoncho, Chuo-ku, Tokyo

Opening hours: 10:00-18:00 Tuesday-Sunday, National Holidays, substitute public holidays

Closed on the year-end through the New Year's Holidays

Access:

JR One minute walk from JR Shin Nihonbashi Station Exit 5

Two minute walk from Mitukoshimae Station Exit A10

No.10 Kodenmachi Prison and Execution Ground

Have a glimpse of the Edo period "torture chamber"



Kodenmachi Ichinobu Chokai

5-1 Nihonbashi-kodenmachi, Chuo-ku, Tokyo

Inside Jishi Square

Opening hours: 9:00-18:00 Monday-Saturday

Access:

Three minute walk from Kodenmachi Station Exit 4

No.13 Hakozaicho hako yon cho kai Mikoshi ko -portable shrine storehouse

"Mikoshi" elaborately designed by Asako Shukei



Administrator:Hakozaicho hako yon cho kai

26-1 Hakozaiki-cho, Nihonbashi, Chuo-ku, Tokyo

Opening hours: 8:00-21:00 All through the year

Access:

Two minute walk from Suitengumae Station Exit 2

No.8 Ozu Museum (traditional Japanese paper)



Exhibition of the history of the Japanese "Paper Trade"



Administrator: Ozu Shoten Co., Ltd.

3-6-2 Nihonbashihoncho, Chuo-ku, Tokyo

Ozu Honkan Bldg.

Opening hours: 10:00-18:00 Monday-Saturday

(Closed on the year-end through the New Year's Holidays)

Access:

JR Two minute walk from JR Shin nihonbashi Station Exit 5

Five minute walk from Kodenmachi Station Exit 3

Five minute walk from Mitsukoshimae Station Exit A10

No.11 Edo-ya's collection of traditional natural-fiber handmade brushes



A craftsmanship lasting from the Edo period



Administrator: Edoya Co., Ltd.

2-16 Nihonbashi-kodenmachi, Chuo-ku, Tokyo

Opening hours: 9:00-17:00 Monday-Friday

(Closed on National Holidays and the year-end through the New Year's Holidays)

Access:

Five minute walk from Kodenmachi Station Exit 3

JR Ten minute walk from JR Shin-nihonbashi Station Exit 5

No.14 Dyehouse "Tora no Ori" -tiger in the cage



Display of dyed goods- stylish culture lasting from the Edo period



Administrator: Takatora Shouten Ltd

2-45-6 Nihonbashi-hamacho, Chuo-ku, Tokyo

Opening hours: 9:00-18:00 Monday-Saturday (until 17:00 on Saturdays)

(Closed on National Holidays and the year-end through the New Year's Holidays)

Access:

One minute walk from Hamacho Station Exit A2

No.9 Ibasen Ukiyo-e Museum



Wide range of artworks covering Ukiyo-e to Modern arts



Administrator: Ibasen Co. Ltd

4-1 Nihonbashi-kofunecho, Chuo-ku, Tokyo

Opening hours: 8:00-20:00 (Shops opening hours:10:00-18:00/Monday-Friday)

(Closed on the year-end through the New Year's Holidays)

Access:

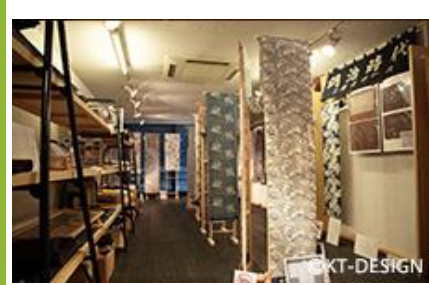
JR Five minute walk from JR Shin nihonbashi Station

Six minute walk from Mitsukoshimae Station Exit A6

No.12 Yukata (informal cotton kimono) Museum



Delicately designed authentic Yukata



Administrator: Sankatsu Co. Ltd.

3-4-7 Nihonbashi-ningycho, Chuo-ku, Tokyo

Opening hours: 10:00-17:00

Divided in two parts/with guided tours ①15:00 ~ ②16:00~

Monday-Friday

(Closed on National Holidays and the year-end through the New Year's Holidays)

Access:

Two minute walk from Ningyochi Station Exit A5

No.15 Edo Folding Screens and Fusuma Exhibition



Traditional crafts requiring artistic sense and craftsmanship



Administrator: Kyoshin-do Inasaki

2-48-7 Nihonbashi-hamacho, Chuo-ku, Tokyo

Opening hours: 9:00-18:00 Monday to Saturday

(Closed on National Holidays and the year-end through the New Year's Holidays)

Access:

One minute walk from Hamacho Station Exit A2

No.16 Mitsubishi Warehouse • Edobashi History Gallery

The history of the waterfront city and its architecture



Administrator: Mitsubishi Warehouse Inc.

1-19-1 Nihonbashi, Chuo-ku, Tokyo

Opening hours: 7:30 - 19:30 Monday-Friday
/7:30 - 13:30 Saturday

(Closed on National Holidays and the year-end through the New Year's Holidays)

Access:

- A** Three minute walk from Nihonbashi Station D2
- G T** Four minute walk from Nihonbashi Station D4
- G Z** Five minute walk from Mitsukoshimae Station B6
- JR** Fifteen minute walk from JR Tokyo Station Yaesu Chuo Exit

No.19 Tsukuda Machikado Museum

The biggest "Mikoshi-portable shrine" within Tokyo and the legendary wooden Dragon Dun's Heads



Administrator: Tsukuda Itchome Chokai

1-2-10Saki, Tsukuda, Chuo-ku, Tokyo

Open hours: 24hours, year-round

Access:

- Y E** Five minute walk from Tsukishima Station Exit 6

No.22 Harumi Community Museum

Relax and feel at home at Harumi Community Museum and Park (new symbol of the town with its own history)



Administrator: Harumi Rengo Chokai

2-4 Harumi, Chuo-ku, Tokyo
Inside Harumi Rinkai Park

Open hours: 24 hours, year-round

Access:

- E** Ten minute walk from Kachidoki Station Exit A2a

No.17 Shu-gyoku Bunko Gallery



Elegant paper culture preserved by "Haibara"



Administrator: Haibara Inc.

2-7-1 Nihonbashi, Chuo-ku, Tokyo

Opening hours: 10:00-18:30 all through the year (until 17:30 on Saturdays and Sundays)

(Closed on National Holidays, the year-end through the New Year's Holidays and Bon Festival Holidays)

Access:

- G T** One minute walk from Nihonbashi Station Exit B6

No.20 Ishikawajima Museum

Display of records on the detailed history of Ishikawajima



Administrator: IHI Inc.

1-11-8 Tsukuda, Chuo-ku, Tokyo
Pier West Square 1st Floor

Open hours: 10:00-12:00/13:00-17:00
Wednesday • Saturday (last entry 16:30)

(Closed on the year-end through the New Year's Holidays)

Access:

- Y E** Six minute walk from Tsukishima Station Exit 6

No.18 Kabutocho • Kayabacho Machikado Museum

Nostalgia of the local history and culture



Administrator: Nihonbashi Shichinobu Rengo Chokai

15-3 Nihonbashi-kabutocho, Chuo-ku, Tokyo

Walk down memory lane seeing the local history and culture

Contact: 090-2465-4001 (10:00 - 19:00)

Open hours: 8:30 - 20:00 all through the year

Access:

- H T** Two minute walk from Kayabacho Station Exit 12

No.21 Kachidoki • Toyomi historical archive museum

Very proud traditional craftsman's technique and history of Mikoshi



Administrator: Kachidoki • Toyomi Rengo Chokai

1-9-8 Kachidoki, Chuo-ku, Tokyo
Inside Tsukishima Dai-ni Park

Opening hours: 10:00-16:00 the 2nd Saturday and Sunday of every month

Access:

- E** One minute walk from Kachidoki Station Exit A4

Simbol

- H** Tokyo Metro Hibiya Line
- Y** Tokyo Metro Yurakucho Line
- Z** Tokyo Metro Hanzomon Line
- G** Tokyo Metro Ginza Line
- T** Tokyo Metro Tozai Line
- E** Toei Subway Oedo Line
- A** Toei Subway Asakusa Line
- S** Toei Subway shinjuku Line



Shopping